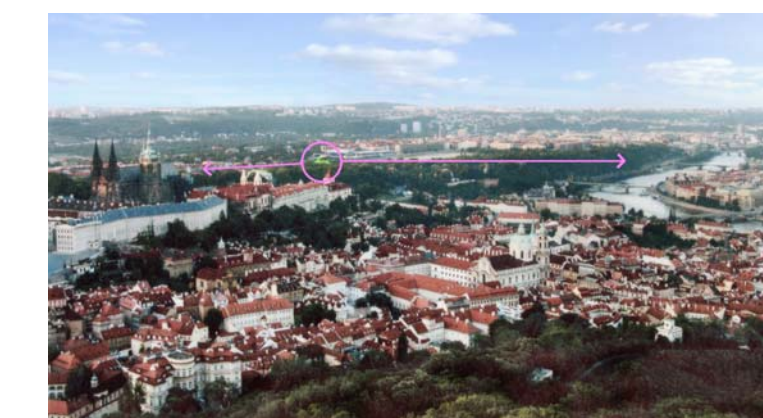


- SITE LOCATION**
- 1 New National Library
 - 2 St Vitus Cathedral
 - 3 Government Building
 - 4 Hanavsky Pavilion
 - 5 Monument Base
 - 6 Queen Anne's Pavilion
 - 7 Kramar Villa
 - 8 St Nicolas Church
 - 9 Old Town Square
 - 10 Rudolfinum Concert Hall
 - 11 Klementinum Building
 - 12 Football Stadium
 - 13 Charles Bridge

- GENERAL LAYOUT PLAN, 1:750**
- 1 New National Library, 2010
 - 2 Proposed Extension for 2050
 - 3 Marble Platform
 - 4 Pedestrian access from Park
 - 5 Pedestrian access from Street
 - 6 Recessed Water Pools
 - 7 Loading Bay
 - 8 Parking Entrance
 - 9 Parking Exit
 - 10 Tunnel



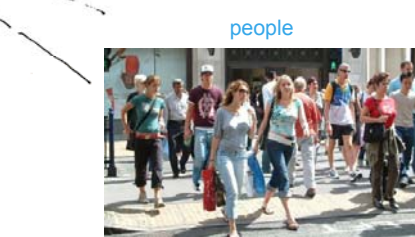
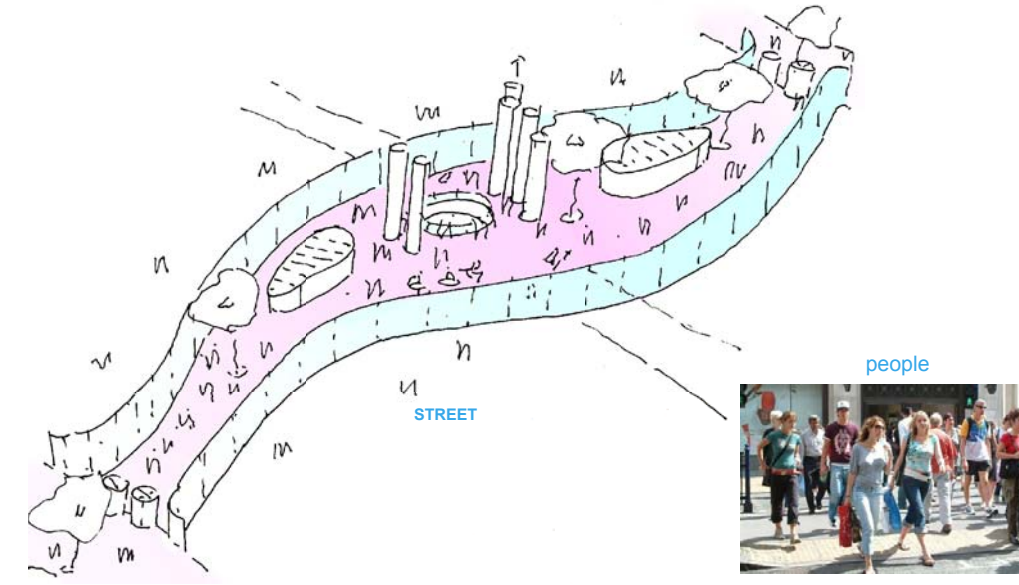
View from Petrin Tower



klementinum



AXONOMETRIC SECTION



people

EXPLODED VIEW

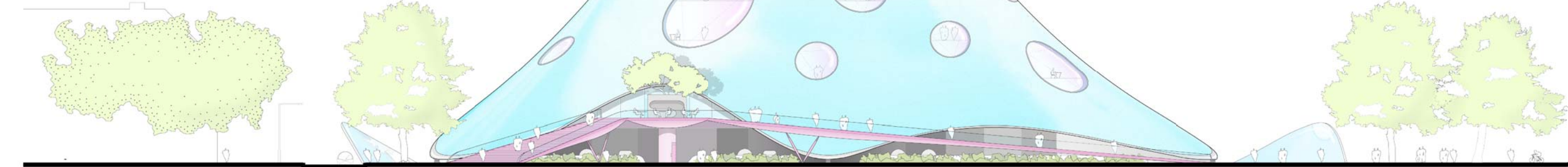
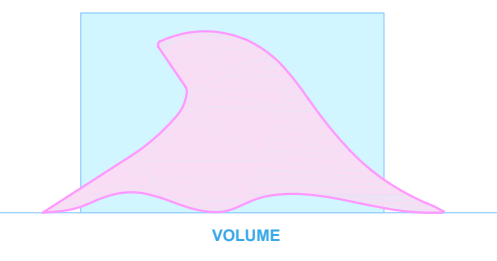
“BOOKS ARE TO PEOPLE AS WINGS ARE TO BIRDS”
JOHN RUSKIN



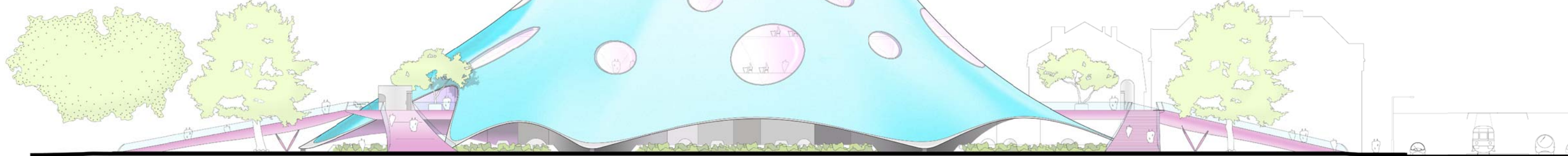
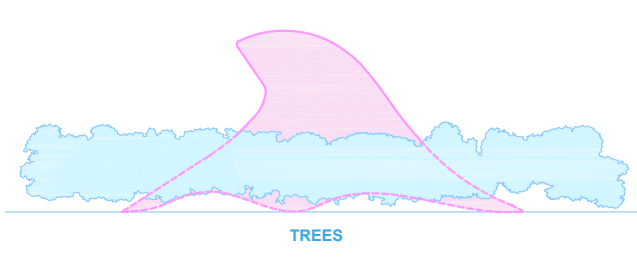
ROOF +48m
 EYE/OKO +37.9m
 LEVEL 7 +32.4m

forms

LEVEL 1 +5.4m
 LEVEL 0 +0.0m



ELEVATION SOUTH 1:250



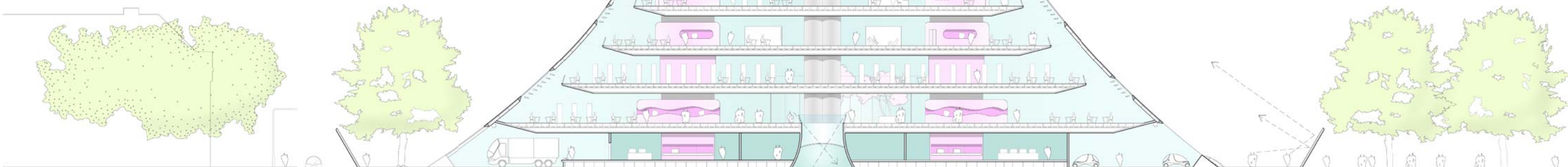
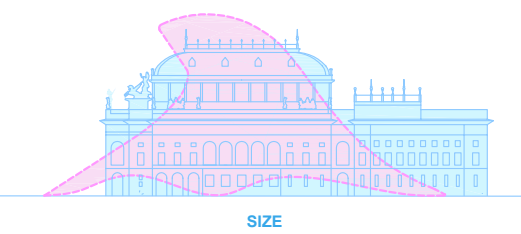
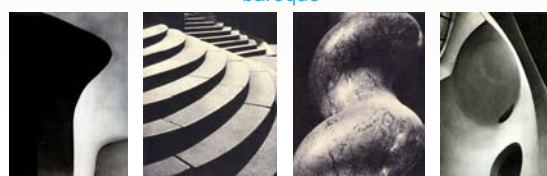
ELEVATION EAST 1:250

"I ALWAYS VISUALISE PARADISE AS A LIBRARY NEVER AS A GARDEN"

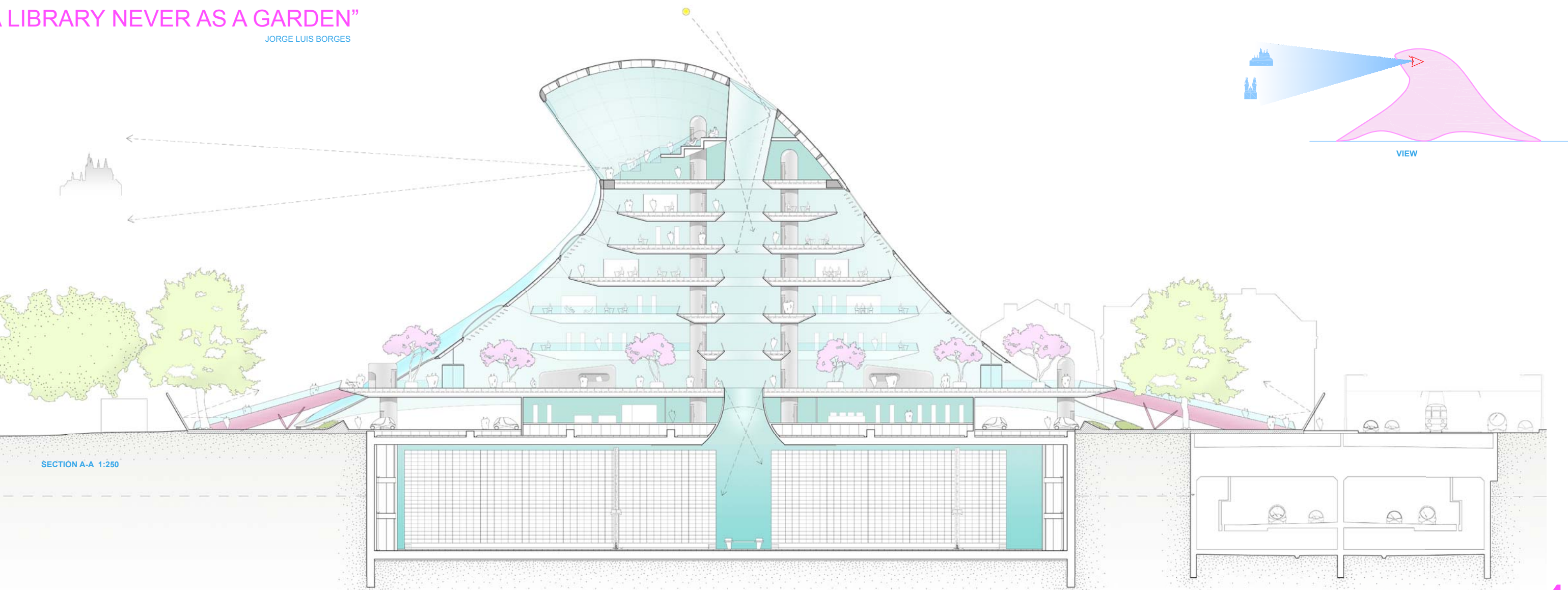
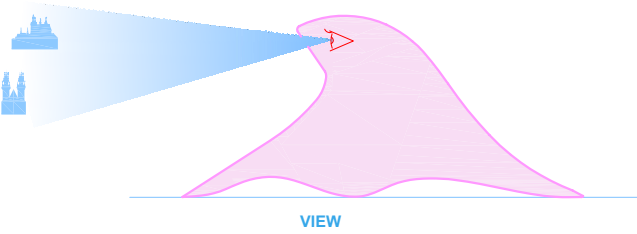
JORGE LUIS BORGES

ROOF +48m
 EYE/OKO +37.9m
 LEVEL 7 +32.4m
 LEVEL 6 +28.2m
 LEVEL 5 +24.0m
 LEVEL 4 +19.8m
 LEVEL 3 +15.0m
 LEVEL 2 +10.2m
 LEVEL 1 +5.4m
 LEVEL 0 +0.0m
 LEVEL -1 -15.5m

baroque



SECTION B-B 1:250



SECTION A-A 1:250

180495XY

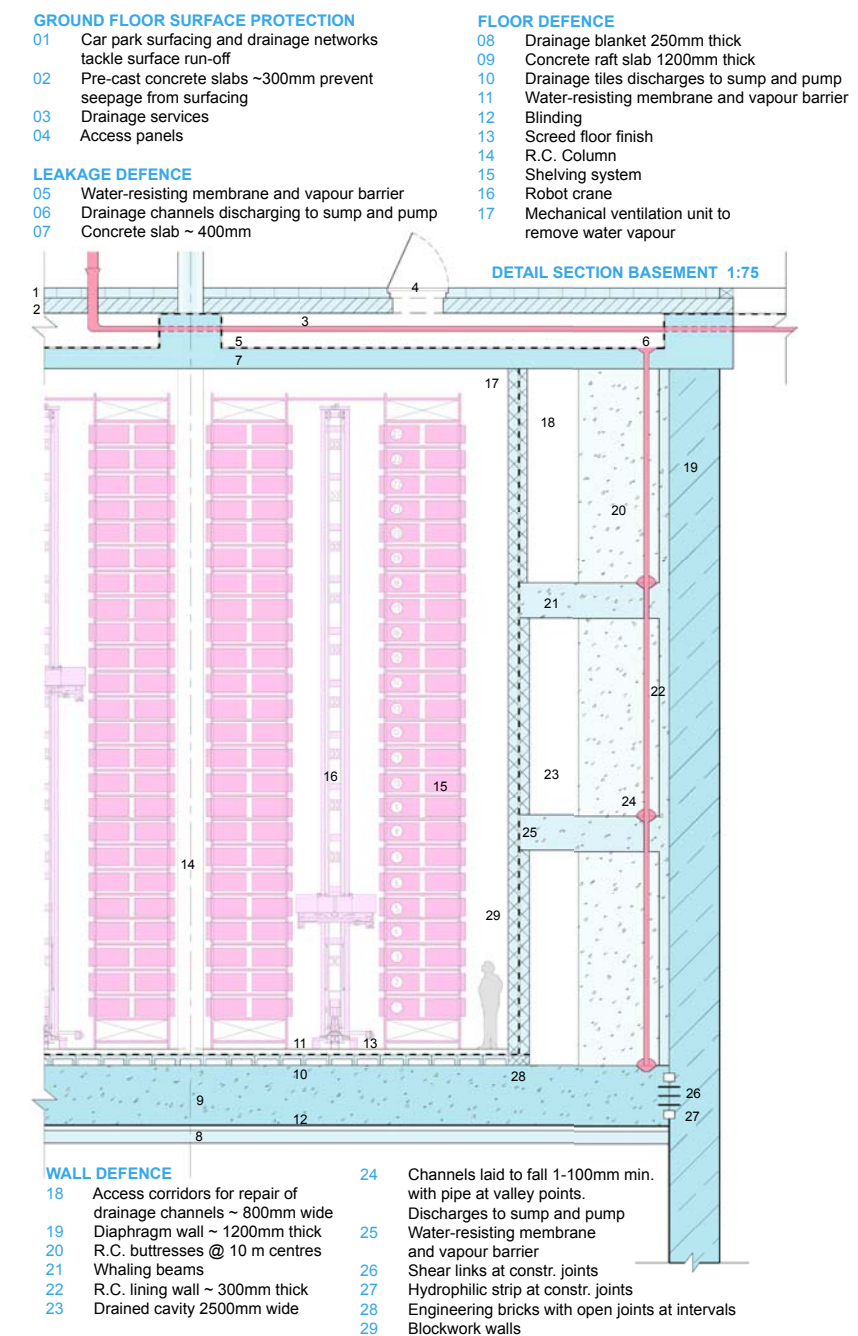
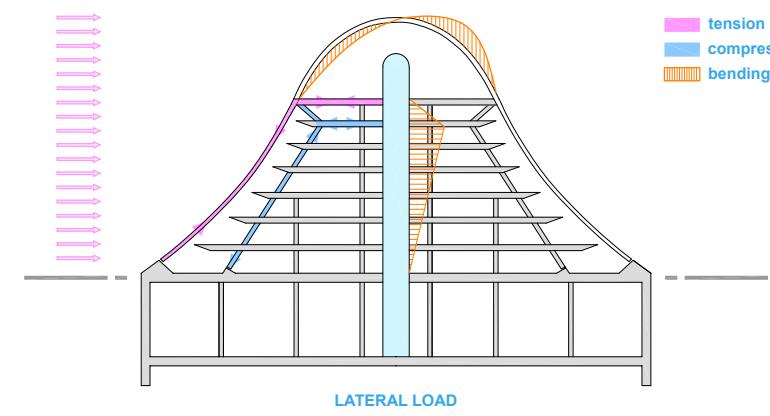
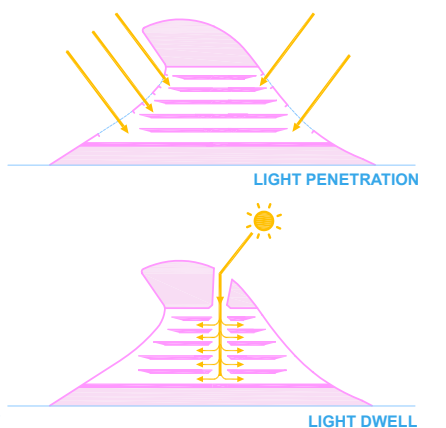
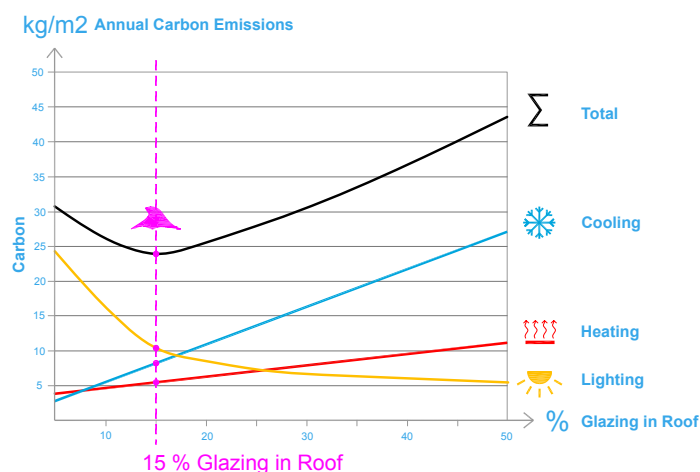
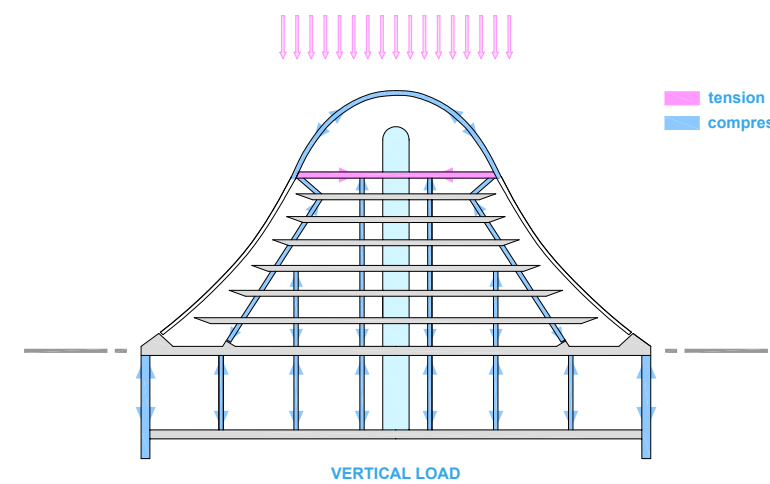


beauty

3

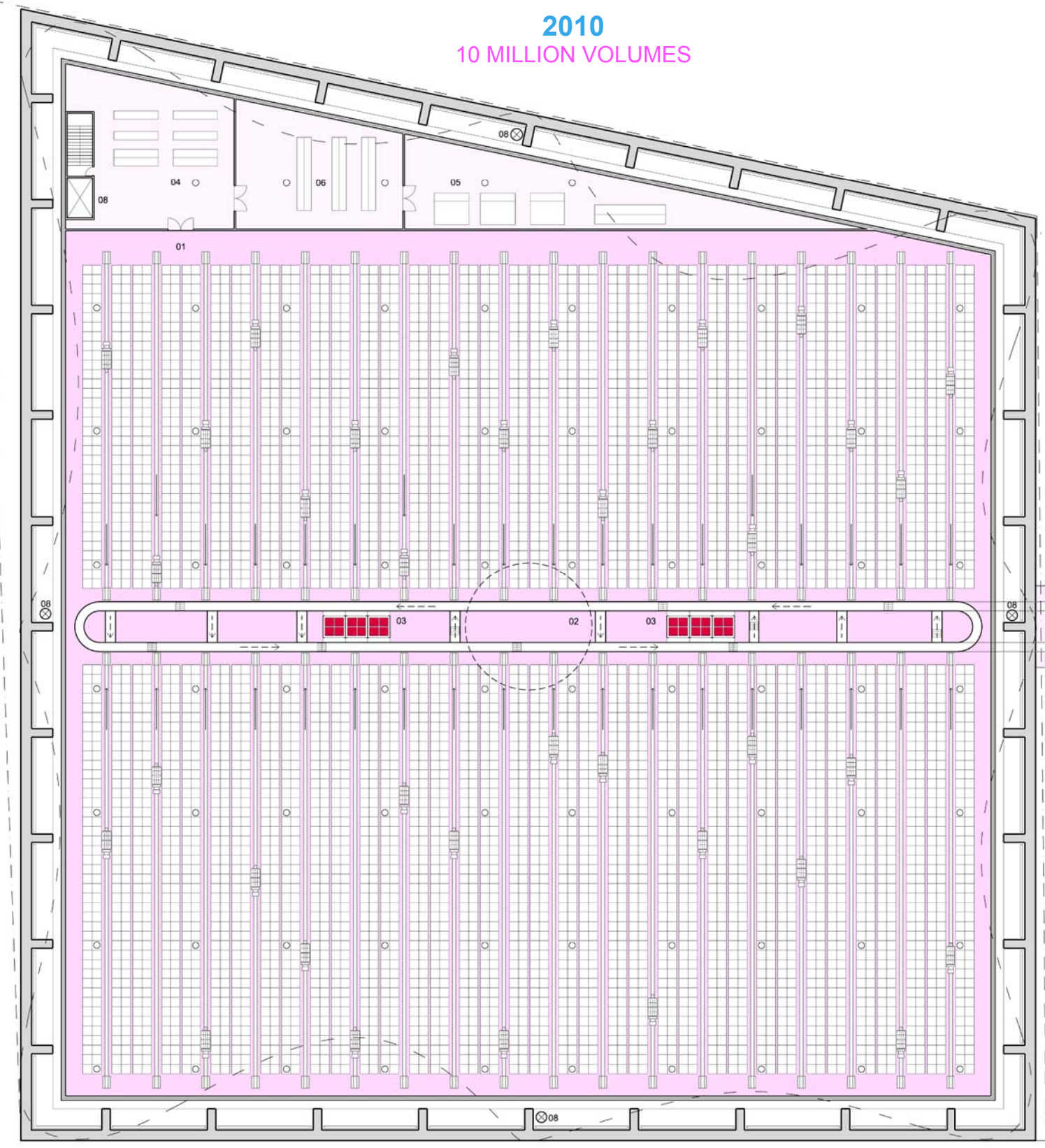
THE NEW NATIONAL LIBRARY OF THE CZECH REPUBLIC

4



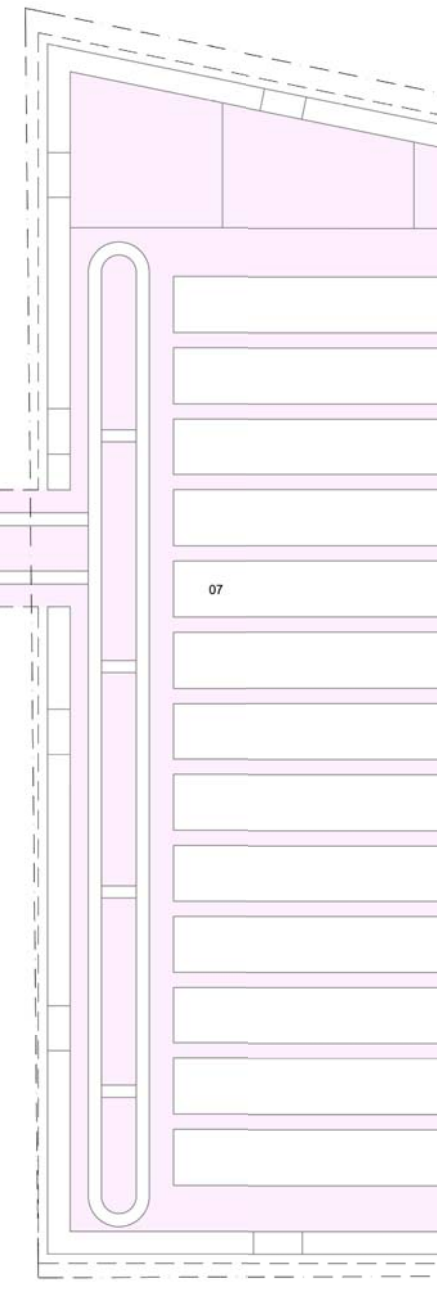
"IN A WELL SELECTED LIBRARY WE ARE LIKE IN ETERNITY"

T. G. MASARYK



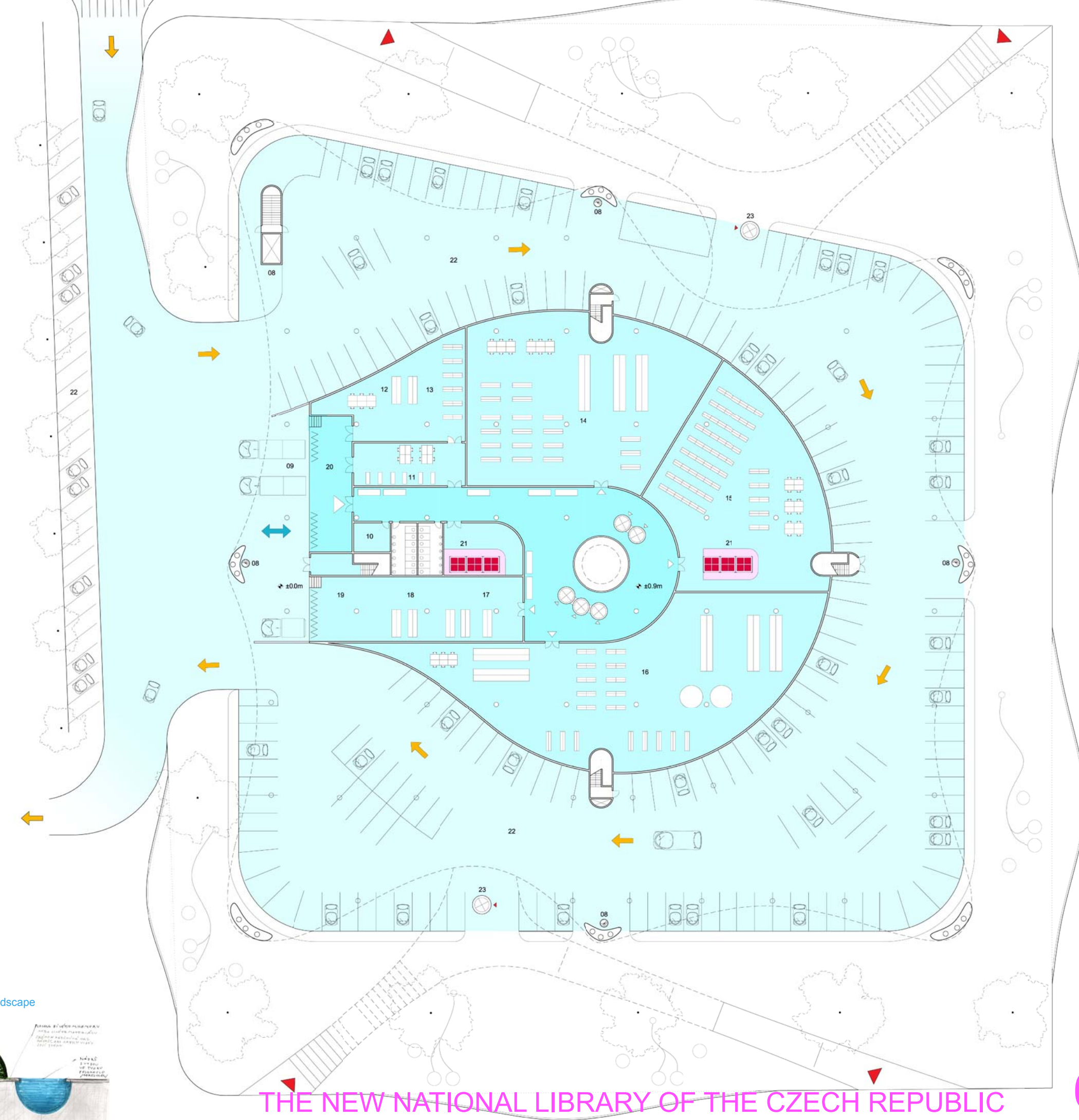
2050

+4 MILLION VOLUMES



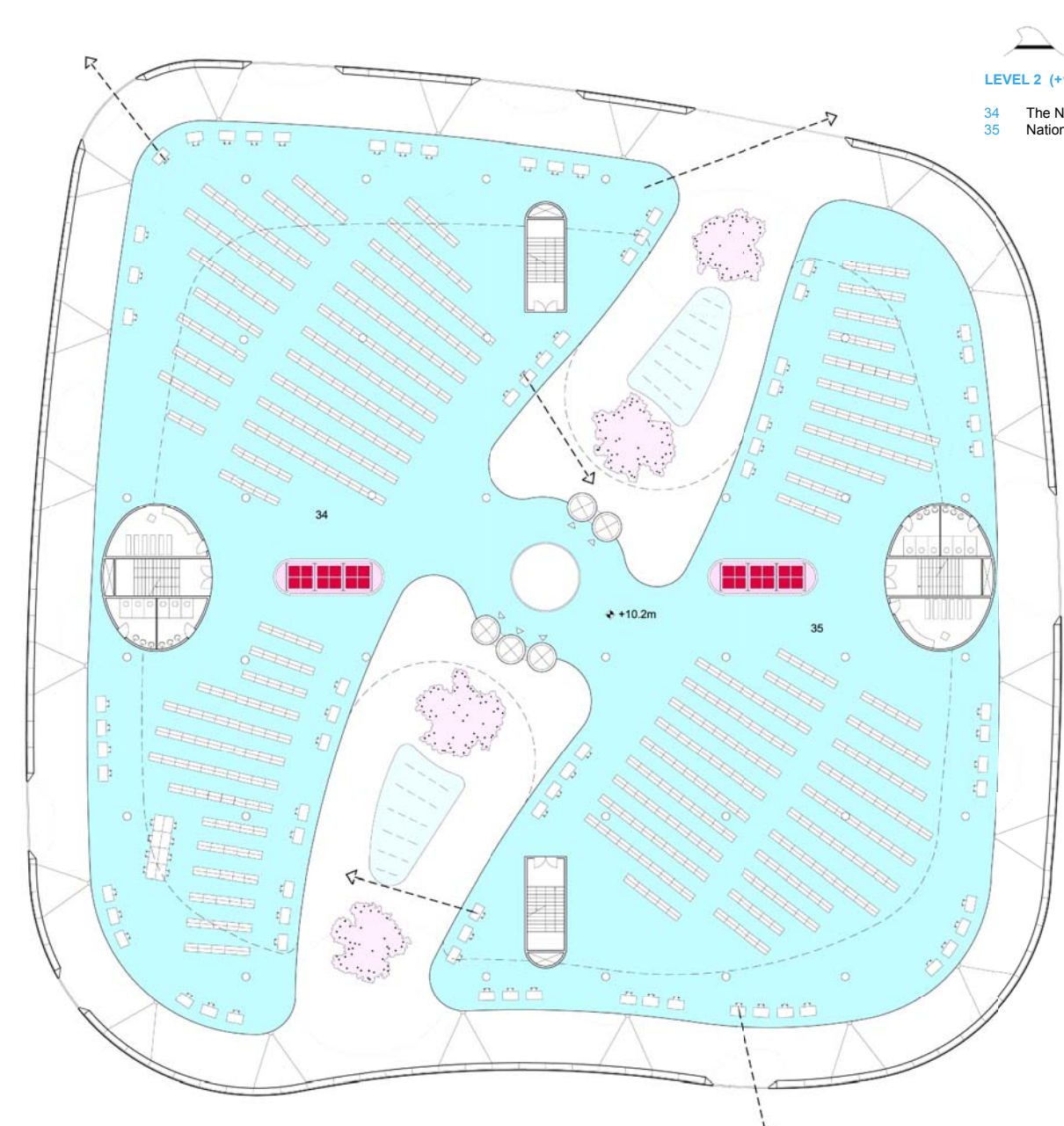
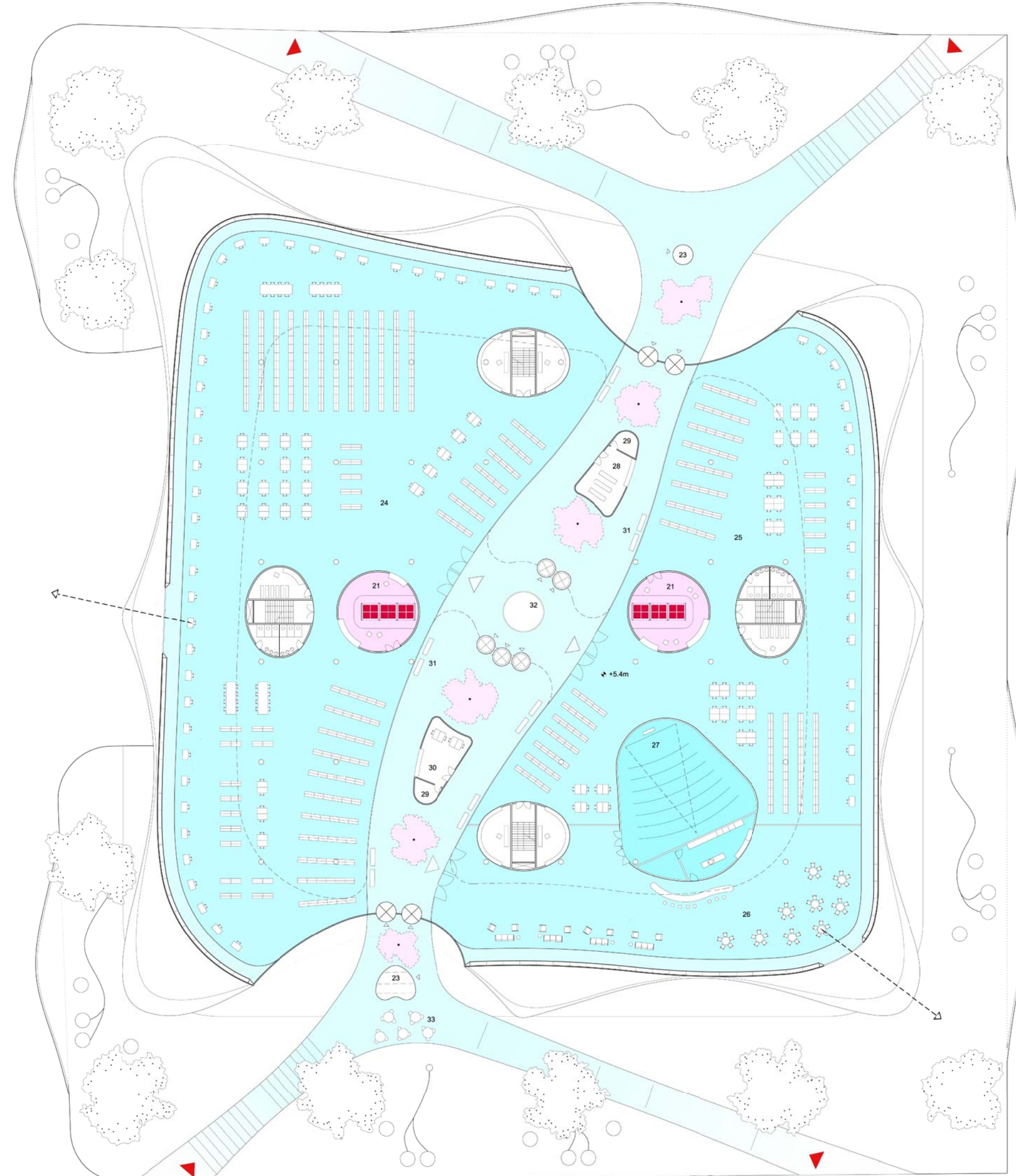
LEVEL 0 (+0.0m) 1:250

- 09 Loading Bay
- 10 Security
- 11 Office / Reception / Post
- 12 Staff Area
- 13 Universal Maintenance Workshop
- 14 Storage and Material
- 15 Acquisition / Handling and Storage Plant
- 16 Chemicals
- 17 Cleaning Storage
- 18 Waste Management
- 19 Handling Area
- 20 Book Counter
- 21 Car Park
- 22 Outdoor Lift

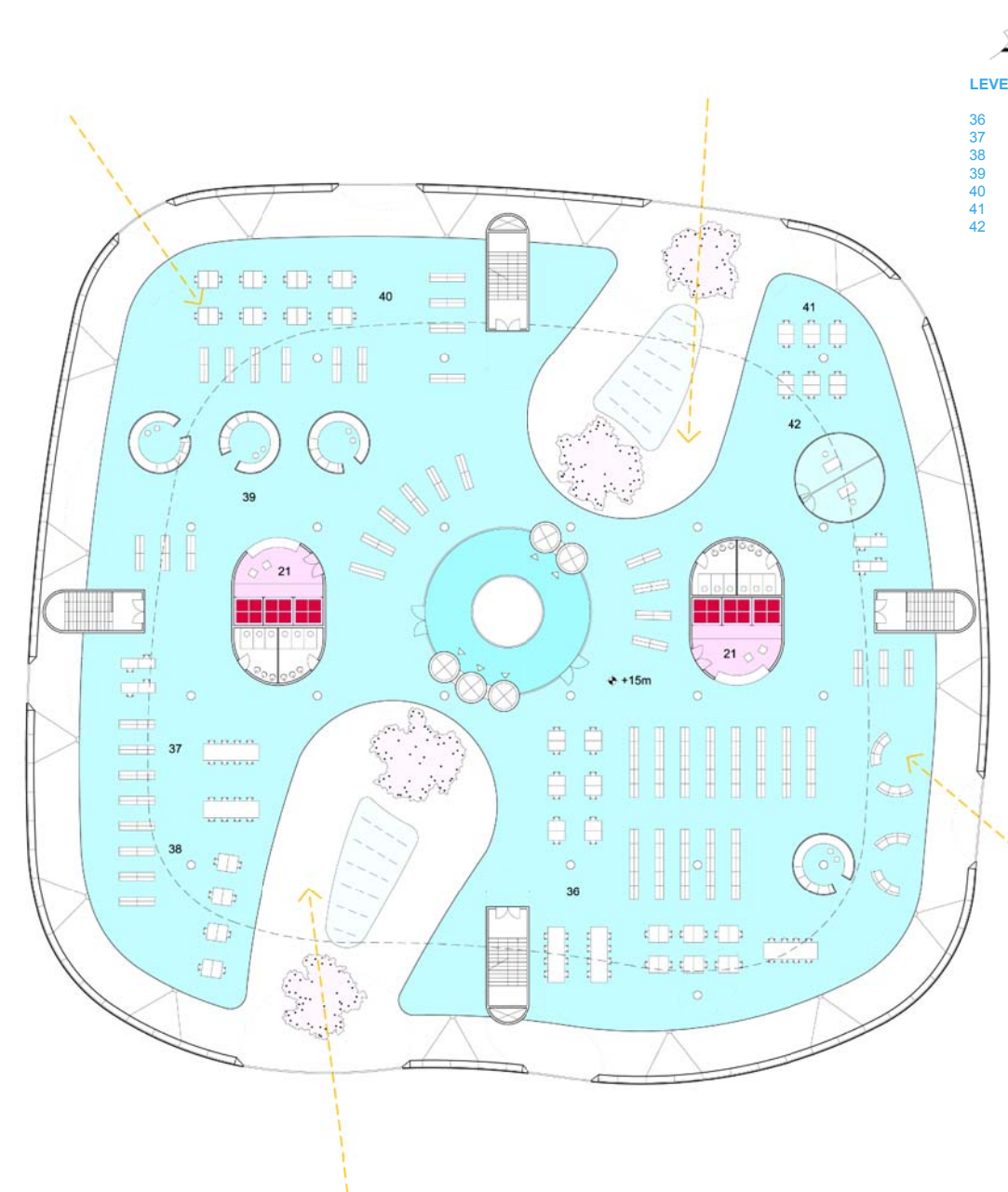


LEVEL -1 (-11.5m) 1:250

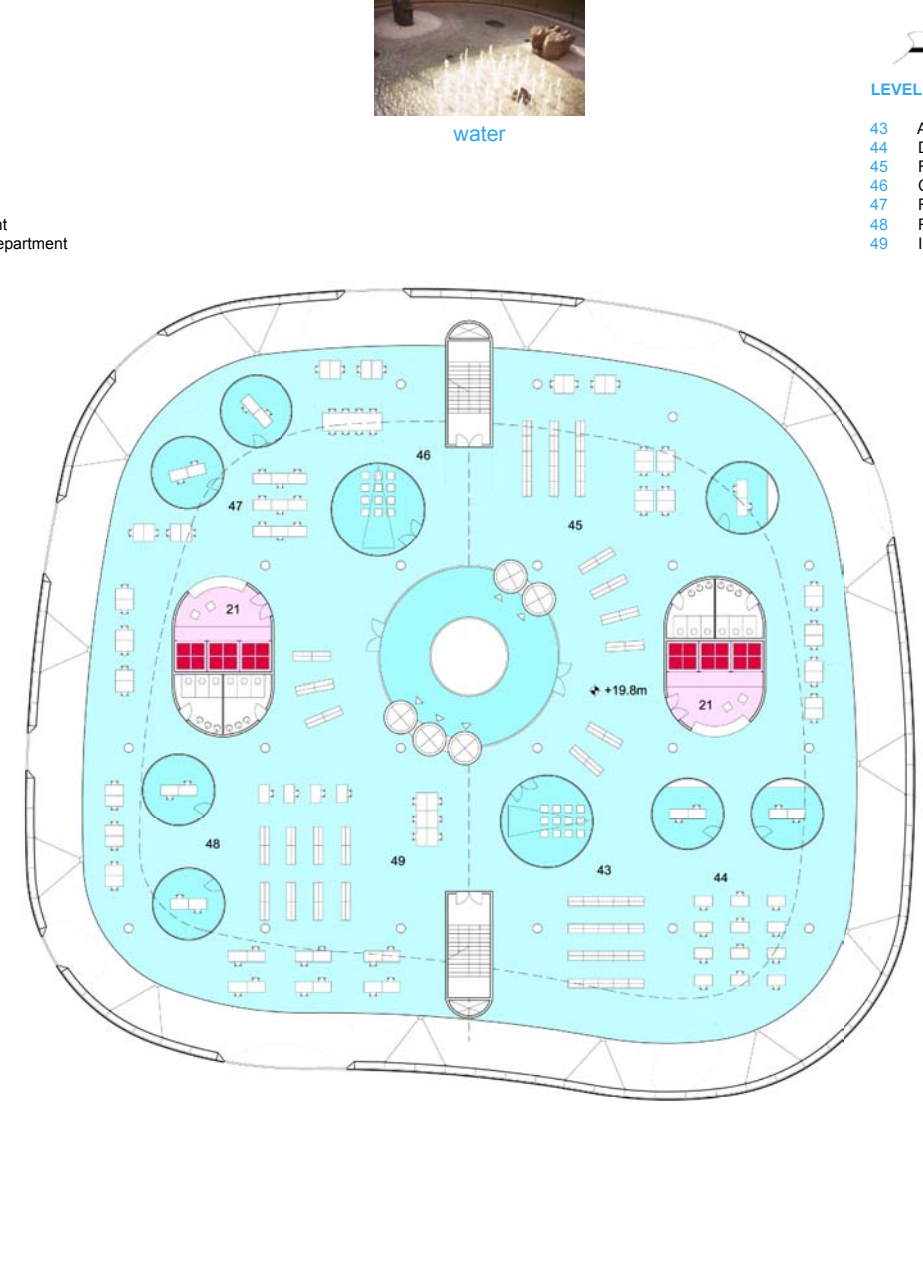
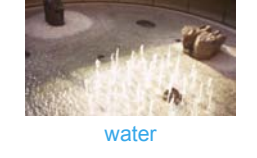
- 01 Automatic Book Storage
- 02 Panoramic Opening
- 03 Book Lifts
- 04 Handling Area
- 05 Nitrogen Gas Storage
- 06 Technical Storage
- 07 Future Extension
- 08 Storage access. Lift and stairs



- LEVEL 2 (+10.2m) 1:250
- 34 The National Archive Collection
 - 35 National Archival Management Department



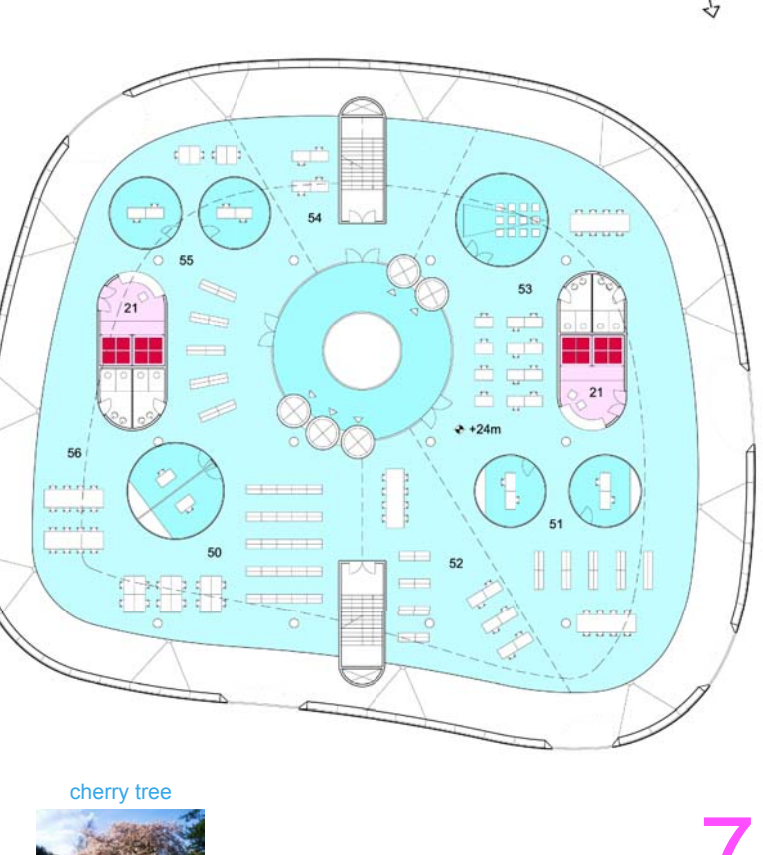
- LEVEL 3 (+15m) 1:250
- 36 Parliament Library
 - 37 Micro Media
 - 38 Quiet Reading Area
 - 39 Electronic Documents
 - 40 Periodicals
 - 41 Reference and ILL Services Department
 - 42 Technical Support and Development Department



- LEVEL 4 (+19.8m) 1:250
- 43 Acquisition Department
 - 44 Domestic Division
 - 45 Foreign Division
 - 46 Collection Organisation Department
 - 47 Revision Department
 - 48 Reserve Collections Department
 - 49 Int. Numbering Agencies Department



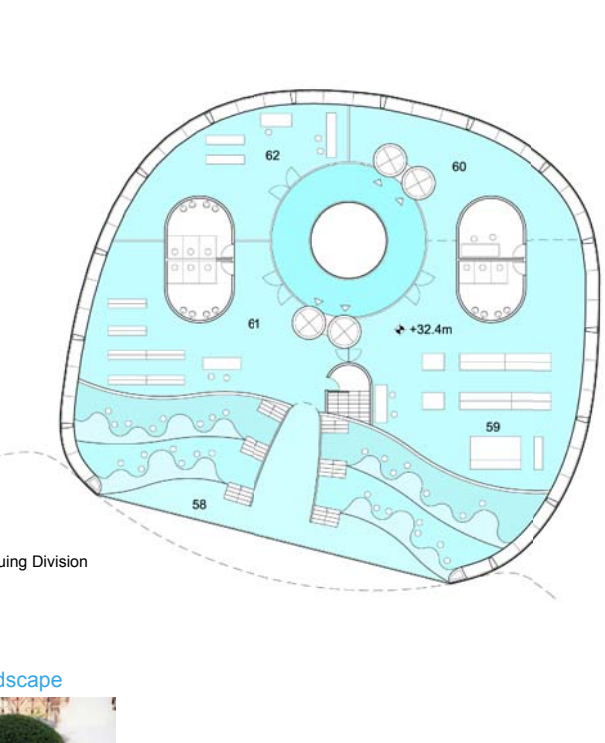
- LEVEL 5 (+24m) 1:250
- 50 Universal Collections Management Department
 - 51 Collections Care Department
 - 52 Preservation Microfilming Department
 - 53 IT Department
 - 54 Digitalisation Department
 - 55 Library System Department
 - 56 Technical Support Department



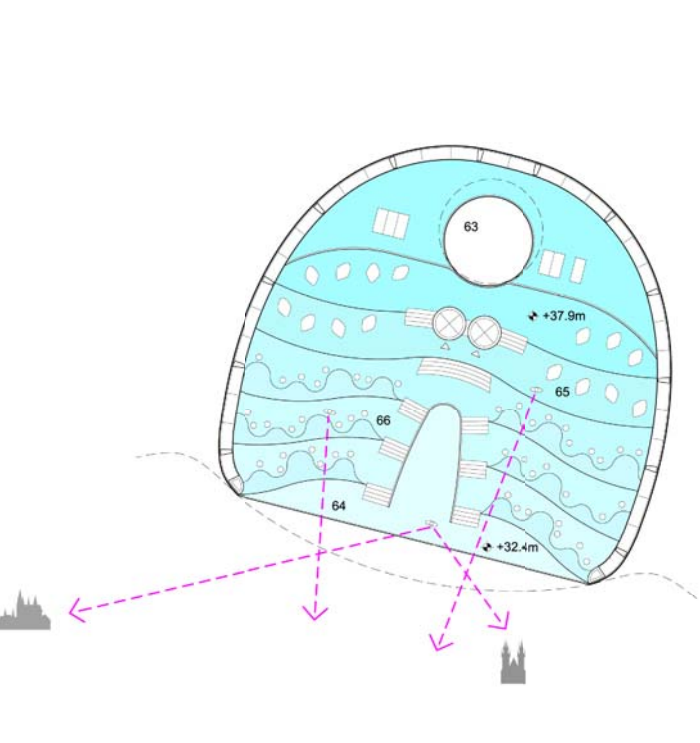
- LEVEL 6 (+28.2m) 1:250
- 57 National Bibliography and Cataloguing Division

“A BOOK IS A GARDEN FOR YOUR POCKET”
ARAB PROVERB

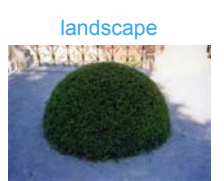
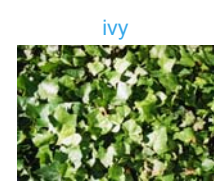
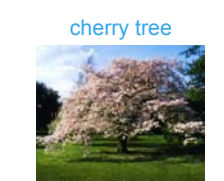
“A ROOM WITHOUT BOOKS IS LIKE A BODY WITHOUT A SOUL”
CICERO



- LEVEL 7 (+32.4m) 1:250
- 58 Viewing Platform
 - 59 Kitchen
 - 60 Storage
 - 61 Lobby
 - 62 Staff Area



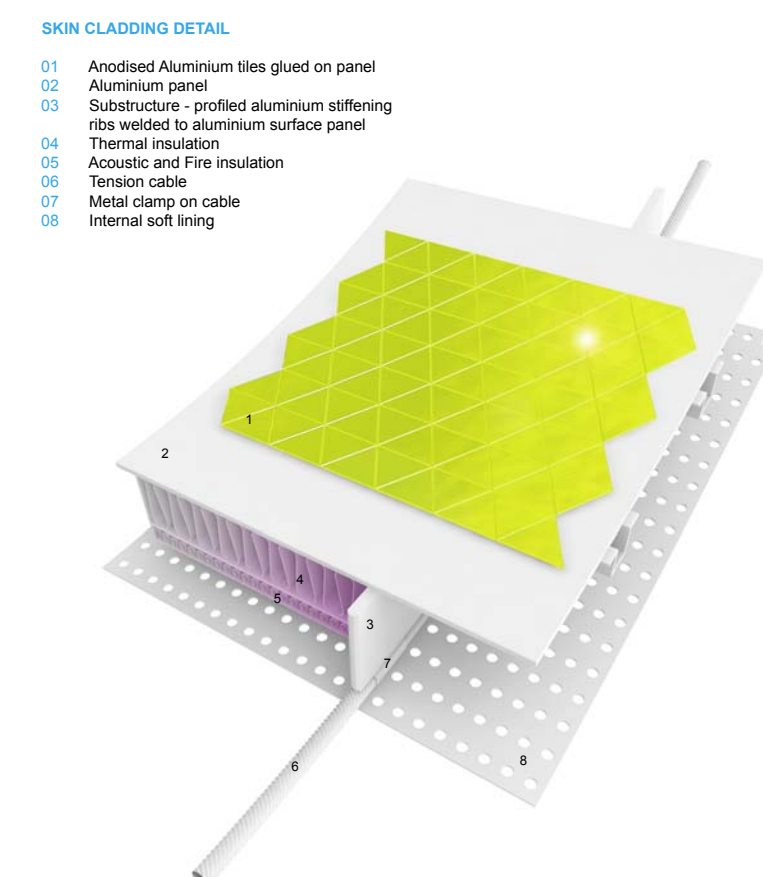
- EYE / OKO (+37.9m) 1:250
- 63 Day light
 - 64 Viewing Platform
 - 65 Relaxation and Reading Area
 - 66 Literary Cafe



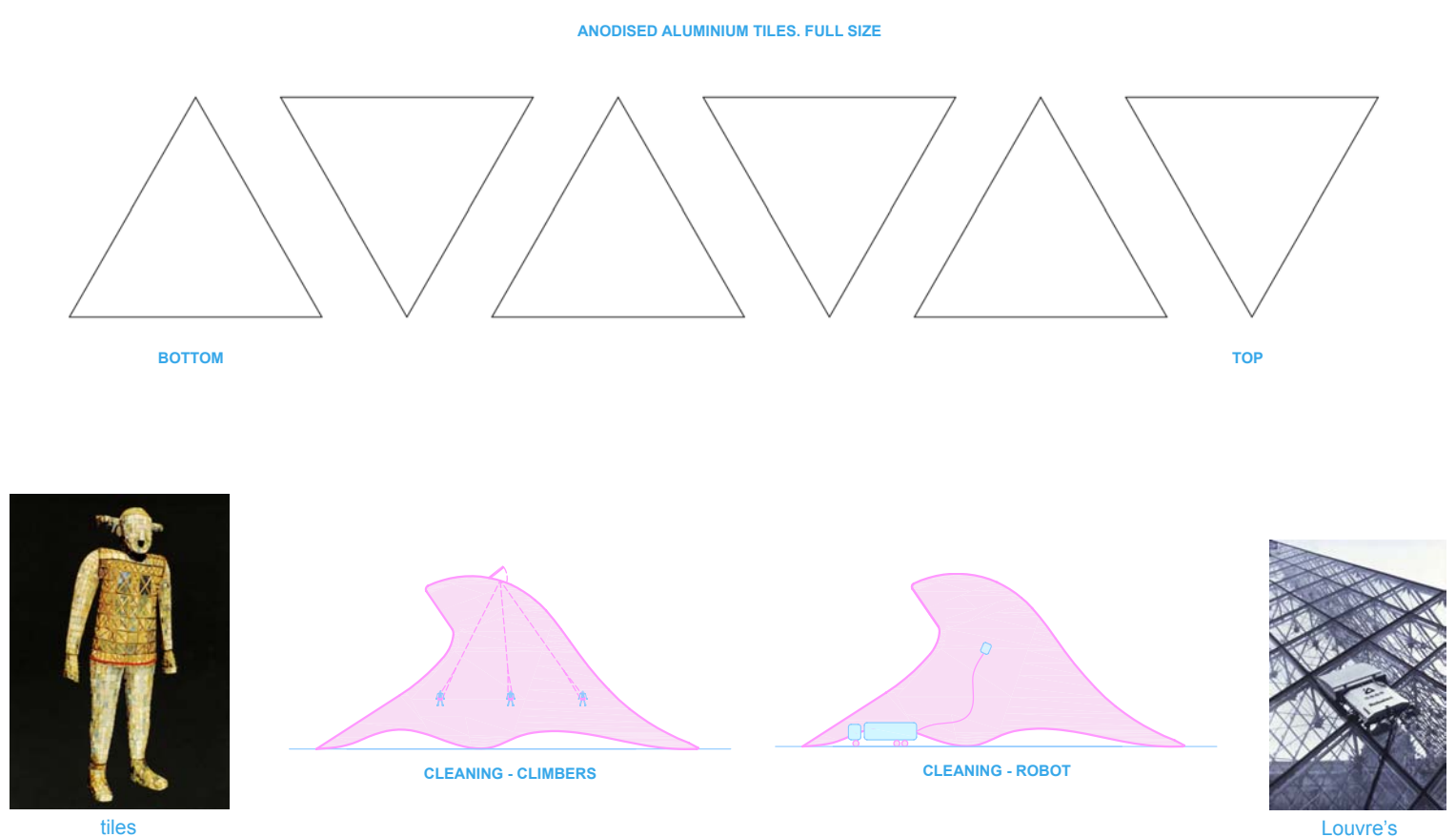
THE NEW NATIONAL LIBRARY OF THE CZECH REPUBLIC



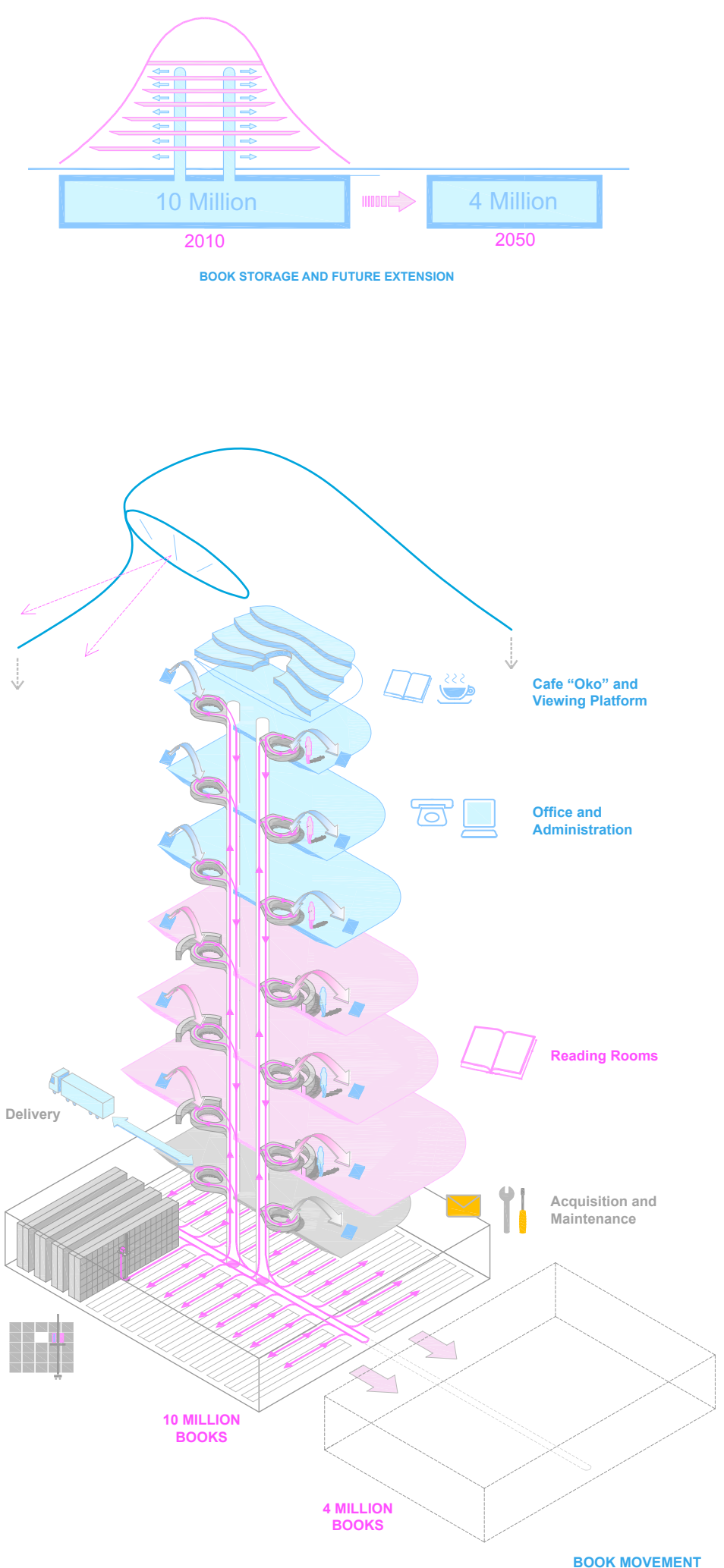
ELEVATION 1:75



- SKIN CLADDING DETAIL**
- 01 Anodised Aluminium tiles glued on panel
 - 02 Aluminium panel
 - 03 Substructure - profiled aluminium stiffening ribs welded to aluminium surface panel
 - 04 Thermal insulation
 - 05 Acoustic and Fire insulation
 - 06 Tension cable
 - 07 Metal clamp on cable
 - 08 Internal soft lining

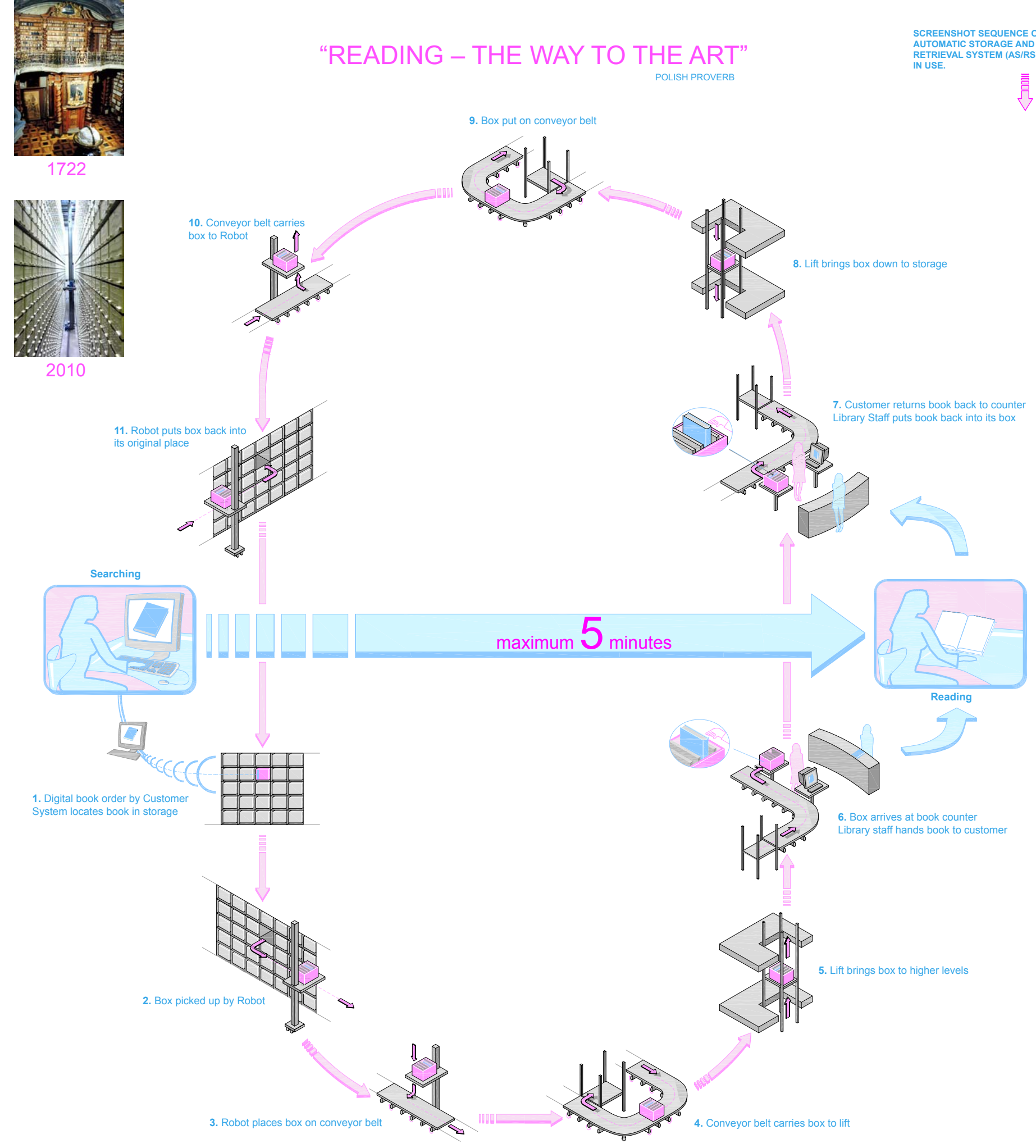


COLOUR STUDIES



10 Million 2010 → 4 Million 2050
BOOK STORAGE AND FUTURE EXTENSION

BOOK MOVEMENT



"READING - THE WAY TO THE ART"
POLISH PROVERB

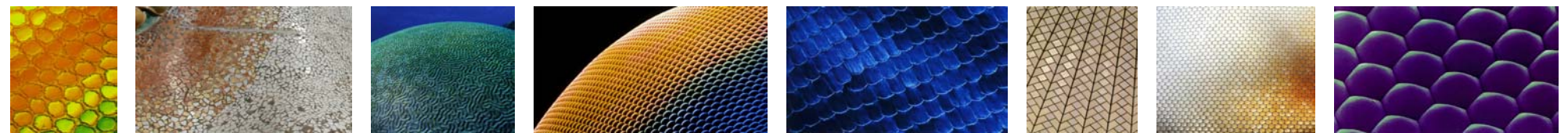
1722



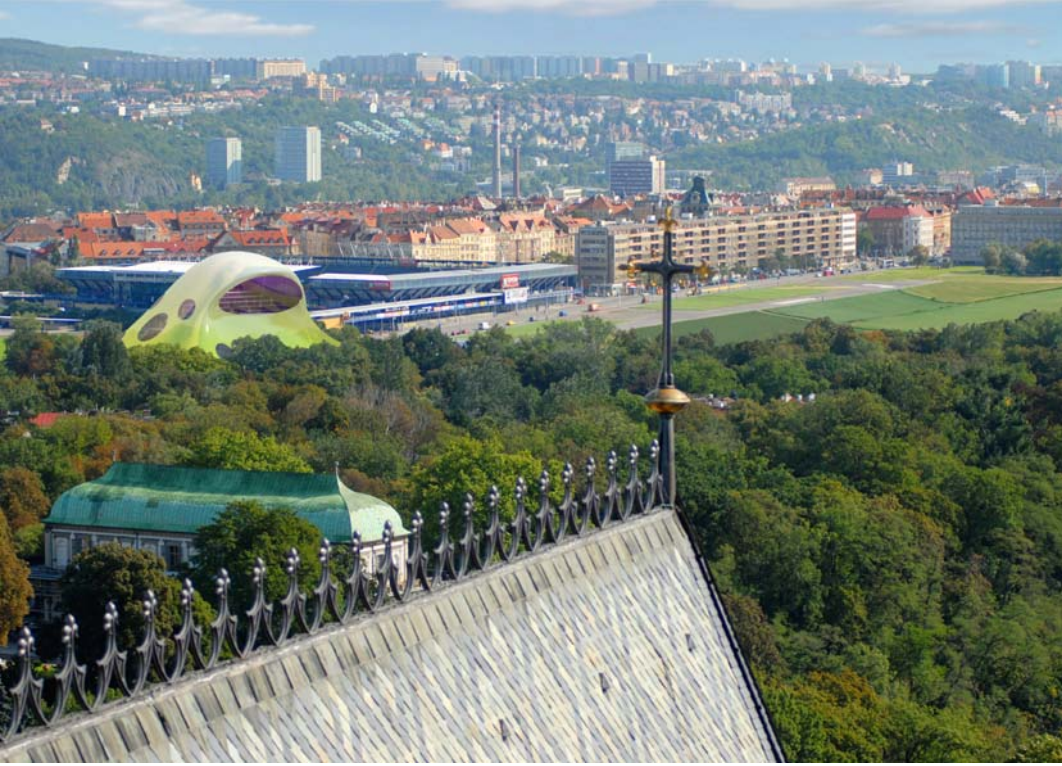
2010



SCREENSHOT SEQUENCE OF AUTOMATIC STORAGE AND RETRIEVAL SYSTEM (AS/RS) IN USE.



skins



VIEW FROM ST VITUS CATHEDRAL



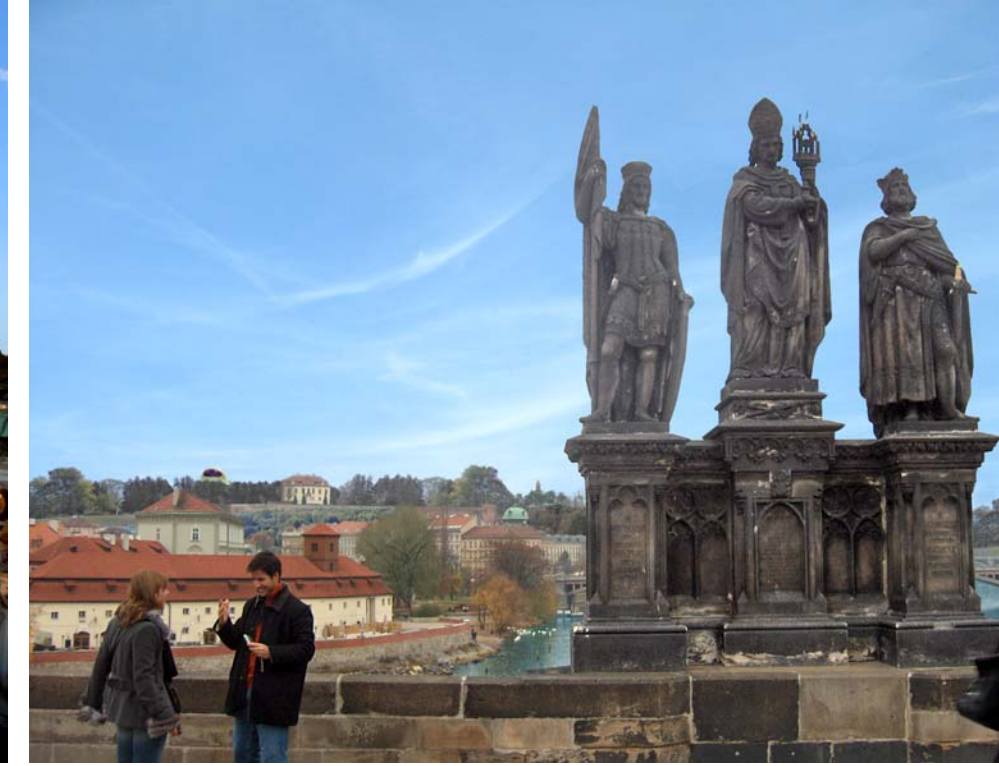
AERIAL VIEW



INTERIOR VIEW OF THE READING ROOM AND BOOK COUNTER



VIEW FROM THE OLD TOWN SQUARE



VIEW FROM CHARLES BRIDGE

- PLACE FOR THIRD MILLENNIUM
- DEMOCRATIC ARCHITECTURE IN A DEMOCRATIC STATE
- KEY WORDS AS BEAUTY, ELEGANCE, COLOUR, PLASTICITY, PEOPLE AND BOOKS

VIEW FROM SOUTH



VIEW FROM EAST



INTERIOR VIEW OF THE "EYE"



NIGHT VIEW FROM MILADY HORAKOVE

- VIEWS AS PART OF URBAN COMPOSITION
- COLOUR COMPOSITION AS REFERENCE TO THE PAST AND FUTURE
- THE 'STREET' AS LINK BETWEEN OUTSIDE AND INSIDE

- BOOKS FROM STORAGE REACH READER IN LESS THAN 5 MINUTES
- BOOKS ARE PLACED BACK TO ORIGINAL POSITION IN STORAGE
- STORAGE FOR 10 MILLION VOLUMES WITH 4 MILLION EXTENDED CAPACITY

- MAXIMUM FLEXIBILITY IN THE INTERNAL BUILDING LAYOUT
- COMFORT OF SOFT FURNITURE THROUGHOUT THE BUILDING
- UNIQUE INTERNAL PLANNING REDUCES FLOOR AREA BY 30%